

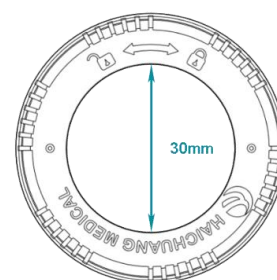
## LOOPIX® Wound Drainage Tube Fixation Device



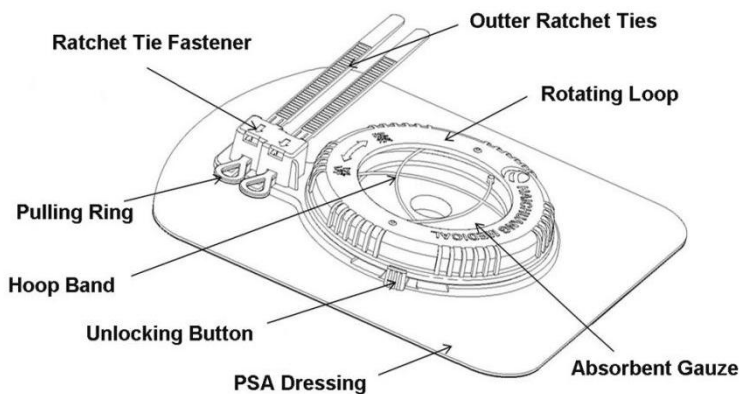
LOOPIX® Wound Drainage Tube Fixation Device indicates the sequence of releasing paper removal with color numbered: **1** **2**

### LOOPIX® Specifications

Model	Inner Diameter of Rotating Ring	Pad Size	Size Range of Catheters
GD8090-A	30 mm	85 x 75 mm	Fr6 ~ Fr28



### LOOPIX® Structure



### Precautions For Use

#### Intended Use:

Loopix® is intended to fix the drainage tube and change the traditional suturing method. Enhance the fixing force and avoid secondary trauma to the skin.

#### Contraindications:

1. Do not use Loopix® to secure vascular catheter.
2. Do not use Loopix® on infected/excessive exudation wounds or skin defected around the catheter.
3. Use with caution if patient is allergic to PSA tape.

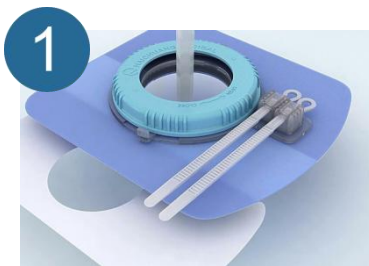
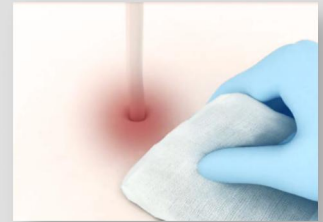
#### Warnings:

1. Single use only.
2. Must clean and dry the application area before use.
3. Change the Loopix® device regularly. The maximum time should not exceed 7 days.
4. Contact the medical staff immediately if large amount of exudate occurs

## LOOPIX® Wound Drainage Tube Fixation Device

### Preparation Before Use:

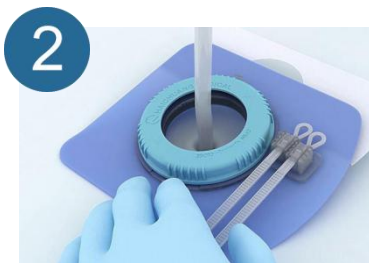
1. Check the incision, if there is any infection, tissue defect or excessive exudation, please treat it before using Loopix®.
2. Clean and dry the skin surrounding the intubating incision before applying Loopix®, to avoid the adhesive being weakened.



Pass the drainage catheter through the rotating ring. **Tear off the #1 releasing paper ① (Blue)** to expose the adhesive of the pad, then paste the device closely on the skin.



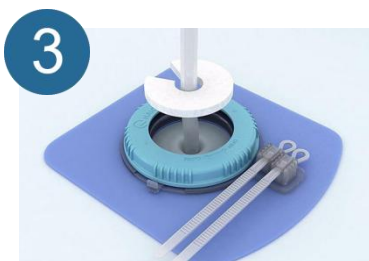
**Rotate the loop (blue ring) clockwise**, the hidden hoops will tighten tube as rotating. Do not use excessive force to rotate or tighten the tube too much.



**Remove the #2 releasing paper ② (Orange)**, keep the catheter in the center of the rotating ring and make sure the pad is fully attached to the skin.



**Fasten two cable ties** to stabilize the direction of the tube. Use appropriate force according to different materials or specification of catheters.



**Place the C-shape gauze** around the drainage catheter to absorb exudate. Make sure the gauze touches the skin.



**Adjust/Release the hoop band:** Holding the unlock button on both sides of the rotating ring, and rotate anticlockwise the ring to loosen the hoop band.