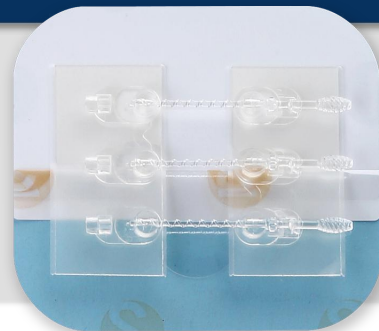


BIFIX[®] Surgical Incision Closure Set

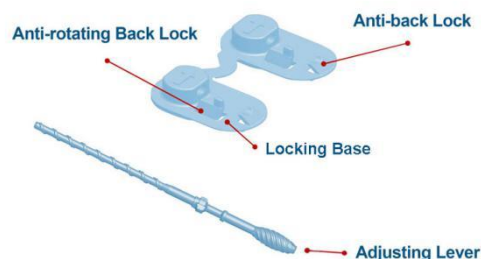
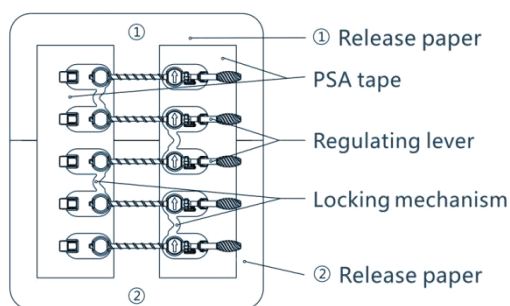
BIFIX[®] Incision Closure Set indicates the sequence of releasing paper removal with color numbered: **1** **2**



BIFIX[®] Specifications

	1	2	3	4	5	6	7	8
Model:	5HWH-2A	5HWH-4A	5HWH-6A	5HWH-8A	5HWH-10A	5HWH-14A	5HWH-16A	5HWH-20A
Length:	2 cm	4 cm	6 cm	8 cm	10 cm	14 cm	8 cm x 2 pcs	10 cm x 2 pcs
Applicable Wound Length:	2 cm	4 cm	6 cm	8 cm	10 cm	14 cm	16 cm	20 cm

BIFIX[®] Structure



Precautions For Use

Intended Use:

BIFIX[®] is intended for closure of epidermis skin incision after surgical operation. Also can be an adjunct to surgical sutures for high tension wounds.

Contraindications:

BIFIX[®] is forbidden to use on incisions with damaged skin, festered, apparently infected or difficult to heal, and in some other similar situation.

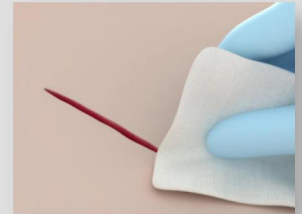
Warnings:

1. Single use only.
2. Don't use it if its package has been damaged.
3. Do not use this product to patients who are serious allergic to the PSA.
4. Do not use the product to infant.

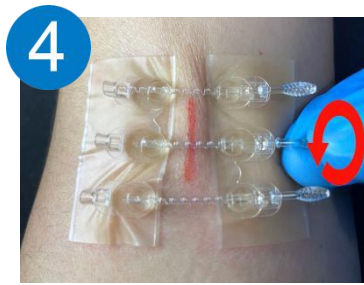
BIFIX[®] Surgical Incision Closure Set

Preparation Before Use:

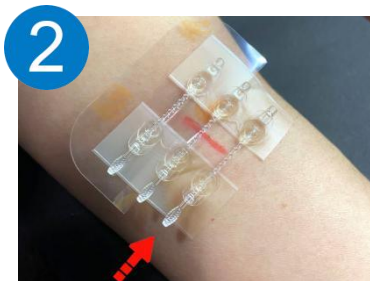
1. Subcutaneous suture is required for large and high tension surgical incisions.
2. Clean the adjacent area of the incision and ensure there are no tissue fluid, blood, lipid, or other contaminants around the skin of the incision, and wait for the antimicrobial solution is completely dry for best adhesion.
3. Select an appropriate model based on the length of the incision.



Remove the #1 releasing paper 1 (Blue) to expose the adhesive on one end of the device.



Screw the regulating levers clockwise to fully close the incision, do not screw too tight at the first round to leave space for the adjustment accurately.



Align the first regulating lever to one end of the incision. **Apply** the BIFIX[®] device on the skin, try to keep the incision centered between two tapes.



Cover the dressing over the BIFIX[®] device to absorb the exudate. Keep the pad core covering the whole device.



Remove the #2 release paper 2 (Orange) and press the BIFIX[®] device to stick to the skin at the same time by the other hand.



The BIFIX[®] device can be **removed** depending on the healing of the incision **after 7-14 days**. If necessary, replace it with a new one after 14 days.