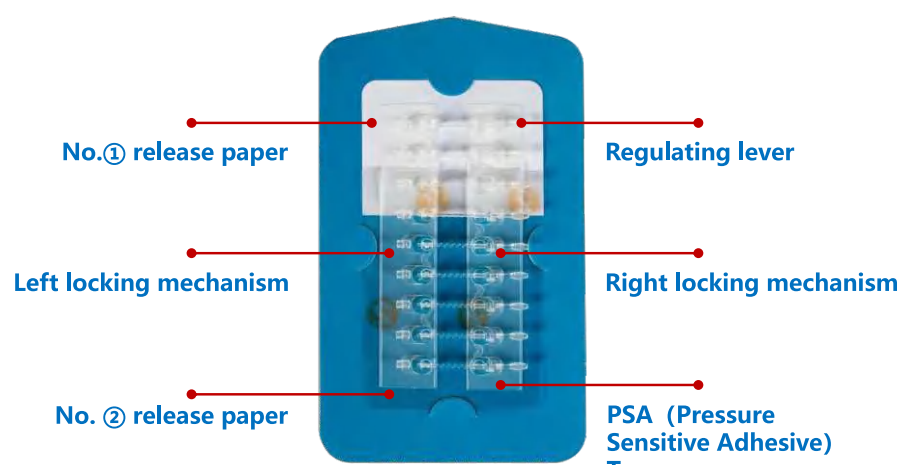


Be Tolerant  
To Diversity  
Innovation  
Technology



## BIFIX<sup>®</sup> Surgical Incision Closure Set

### 08 BIFIX<sup>®</sup> COMPONENTS



CE FDA ISO CFDA



HAICHUANG MEDICAL

Zhejiang Haichuang Medical Device Co., Ltd.  
ADD: F1, Building 3, No. 146, East Chaofeng Rd, Linping,  
Yuhang Economic Development Zone, Hangzhou, Zhejiang, China  
TEL: +86-571-87177590  
FAX: +86-571-86101007  
Web: www.zjhycl.com / www.bifixmed.com



### 01 BIFIX<sup>®</sup> ADVANTAGE



#### Safety

Low sensitization in the hydrocolloid tape, good gas permeability and easy to stretch;  
Implantable polymer material, good biocompatibility, no skin irritation;  
No skin puncturing to reduce the chance of infection.



#### Effectiveness

Patented rotary adjustable closure, balanced tension, scar hyperplasia reduction  
Well performed adhesion and cohesion;  
The closing force is greater than 15 newtons and meets the wound closure requirement.

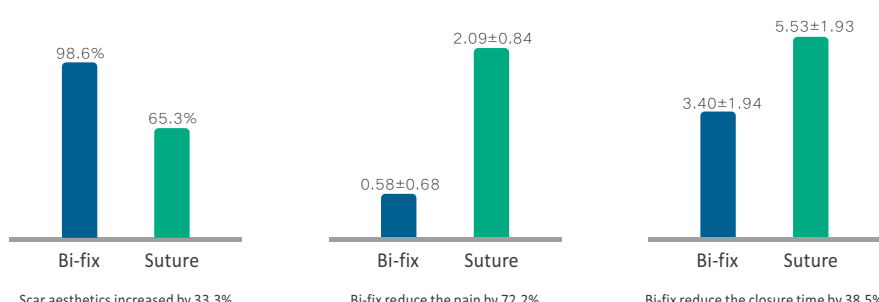


#### Convenience

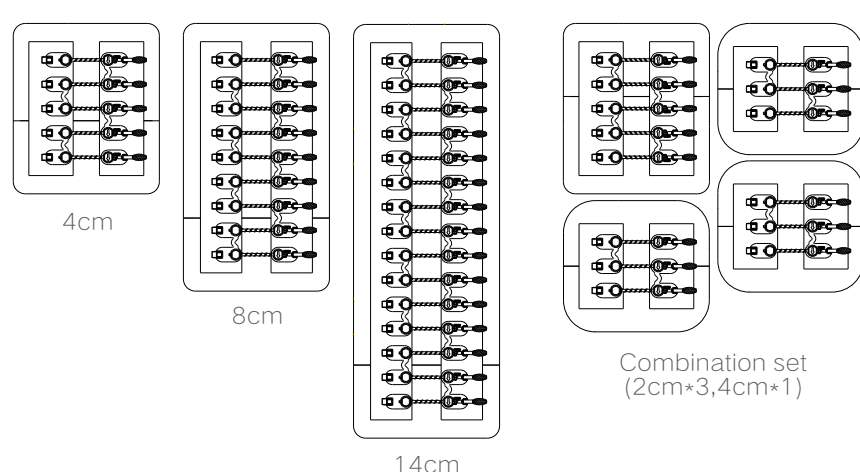
Can be cut or superimposed application for various shapes of wounds;  
Visible design for convenient wound observation and handling;  
No need for suture or staple removal.

### 03 BIFIX<sup>®</sup> CLINICAL STUDIES

A clinical multicenter study of 144 cases showed that Bi-fix is superior in scar aesthetics, wound closure time, and postoperative removal pain to suture.



### 02 BIFIX<sup>®</sup> SPECIFICATION & MODEL



### BIFIX<sup>®</sup> Surgical Incision Closure Set VS Stapler, traditional suture and absorbable suture

Adjustable Wound closure, good blood per-fusion, good wound healing	V/S	Large closing wound tension, insufficient blood per-fusion, easy to cause wound complications
No needles, no foreign body stimulation, aesthetic wound healing	V/S	secondary damage, foreign body stimulation, easy to cause tissue fibrosis and scar
Simple and fast operation, operating time saving	V/S	Long suturing time, complicated operating process
No need for return and staple removal, it can be removed by the patients	V/S	Need to remove the suture or staples, increase the burden of patients

### 04 BIFIX<sup>®</sup> CLINICAL APPLICATION \ OBSTETRICS



Transverse incision surgery



Post-Transverse incision surgery



Vertical incision surgery



Post-Vertical incision surgery



Transverse incision surgery

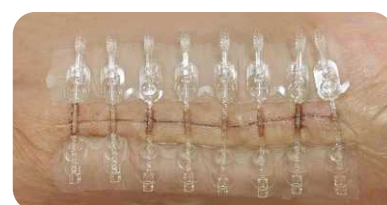


Post-Transverse incision surgery

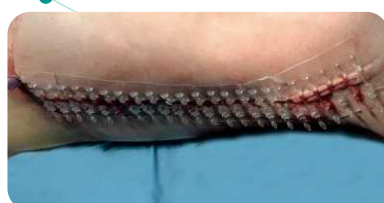
### 05 BIFIX<sup>®</sup> CLINICAL APPLICATION \ ORTHOPEDICS



Hip surgery



Ulnar surgery



Femoral head surgery



Hip replacement surgery



Shoulder surgery



Knee surgery



- Increase scar aesthetics
- Postoperative tension reduction
- Well-performed adhesion
- Low sensitization
- Precise adjustment
- Applicable for different shapes of wounds
- Cuttable or superimposed

### 06 BIFIX<sup>®</sup> CLINICAL APPLICATION \ GENERAL SURGERY



Abdominal surgery



Thyroid surgery



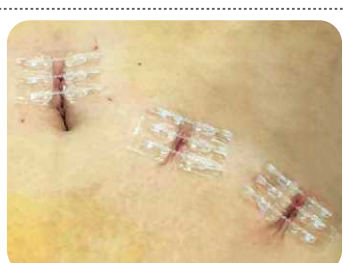
Thoracic and abdominal combined surgery



Breast surgery



Upper abdominal surgery

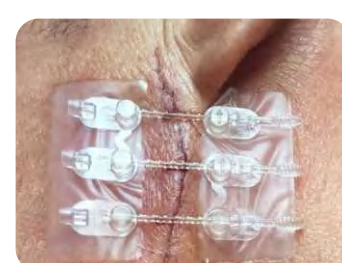


Abdominal laparoscopic surgery

### 07 BIFIX<sup>®</sup> CLINICAL APPLICATION \ OTHERS



Brow arch trauma surgery



Facial trauma surgery



Lumbar fusion surgery



Spinal surgery



Femoral head surgery



Acute appendicitis endoscopic surgery